

Parts Manual

200 Series



AHE-250-D01



Introduction

The purpose of this manual and the information contained herein, is to assist with the identification of components included with the Aqua-Hot 250D unit which may need to be in need to replacement.

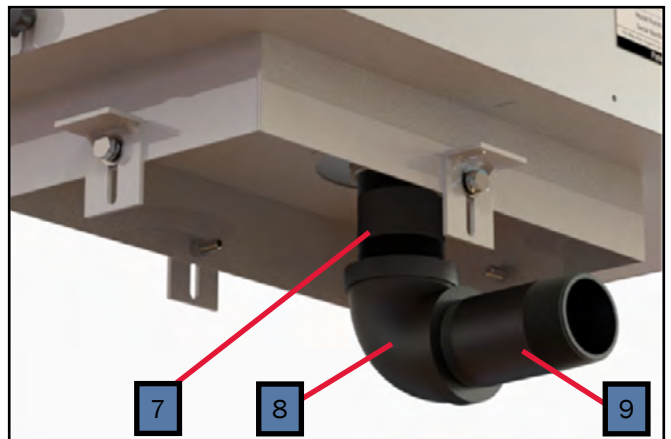
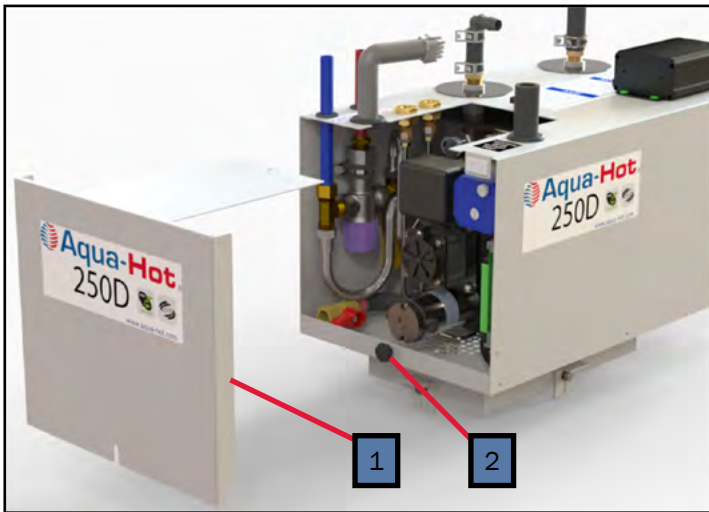
You will notice that some components have been stated multiple times, this is done so as to assist the technician or end-user in correctly identifying components within the Aqua-Hot.

Contents

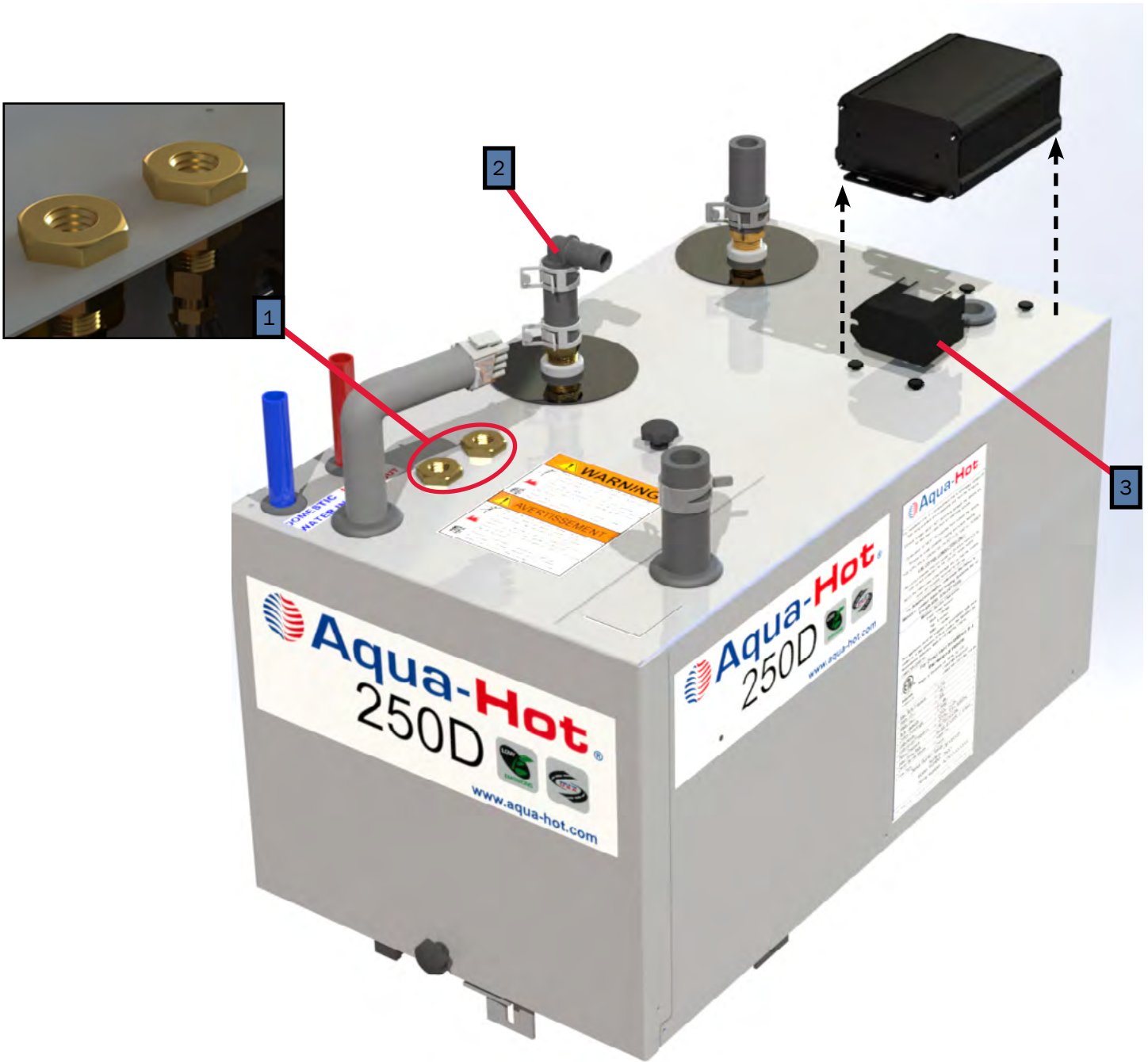
General Components	3
Access Cover	
Thumb Screw	
Expansion Bottle Kit	
¾" Constant Tension Hose Clamp	
Switch Panel Assembly	
Rocker Switch	
Exhaust System Components	
Diesel Fuel Fitting Connections	
90° Hose Elbow w/ ⅝" Barb	
250 Series AC Electric Relay Box	
250D Components	5
Brass Ball Valve (Drain)	
Lead-Free Braided Stainless Steel Faucet Connector	
Danfoss 120° F Tempering Valve	
Honeywell 140° F Tempering Valve	
Fuel Supply Line	
Fuel Return Line	
Low-Temperature Cutoff Thermostat	
Brass Bulkhead Fitting Diesel Fuel Connection	
Control Thermostat/Thermistor	
High-Limit Thermostat	
Interlock Switch	
Three-Way Motorized Valve	
Relay Control Board Cradle	
Buck Boost Module	
200 Series Relay Control Board	
Buehler C21 Fluid Pump	
Pressure Relief Valve	
AC Electric Element	

Diesel Burner Components	7
Aqua-Hot Diesel Burner	
Diesel Air Shutter	
Diesel Igniter Coil	
Fuel Pump Motor	
Set Screw Coupler	
Danfoss Diesel Fuel Pump w/ Solenoid	
Burner Fuel Supply Line	
Diesel Igniter Module	
Diesel Photo-Eye	
Fuel Tower Heat Shield	
Diesel Fuel Nozzle	
Antifreeze and Related Products	8
Pink & Green Propylene Glycol	
Antifreeze Refractory Tester	

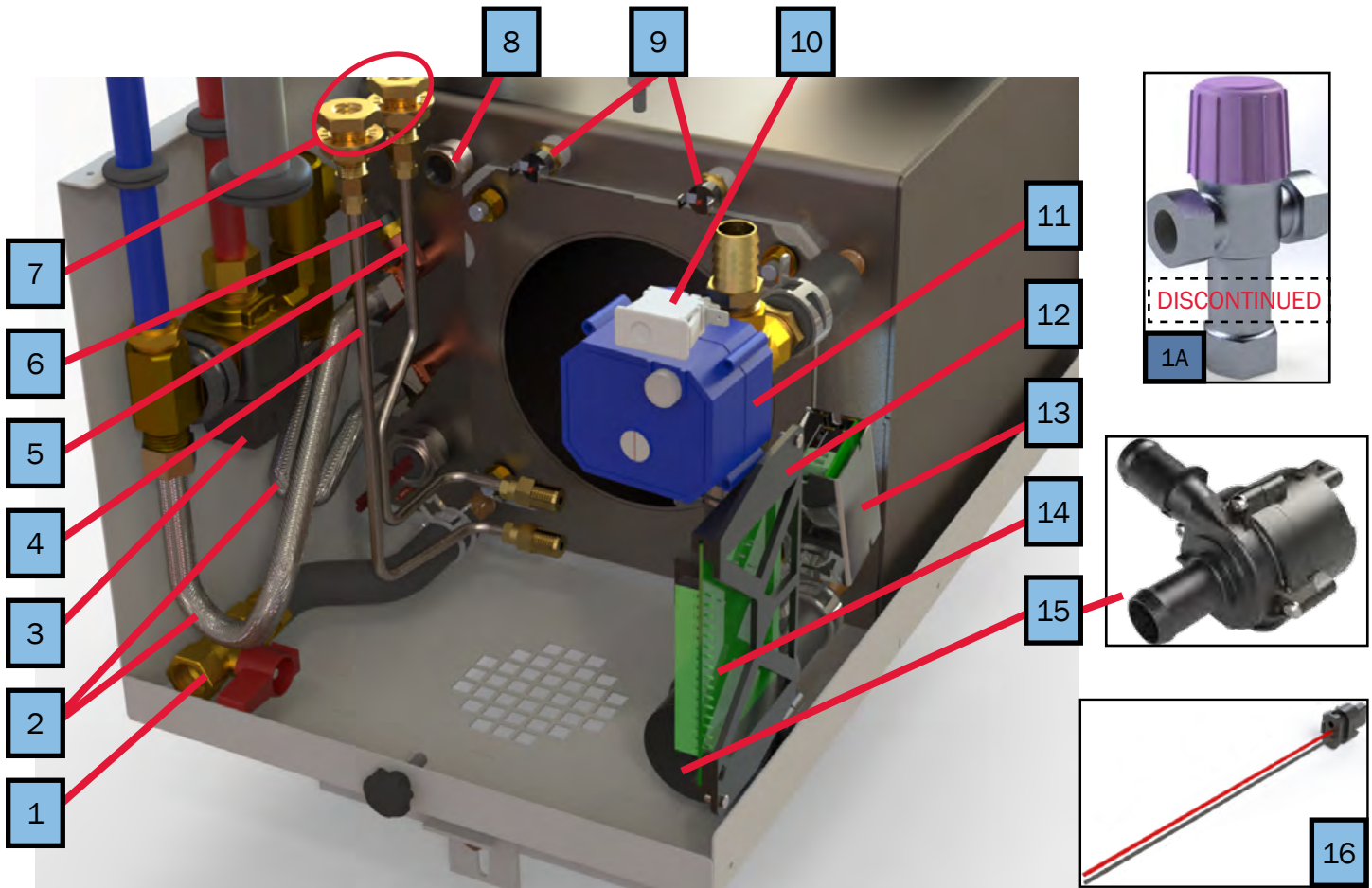
NOTE: Service parts and accessories are available through Aqua-Hot Factory Authorized Service Centers or www.aquahot.com. Click on the part number to route you to the Aqua-Hot webstore to purchase.



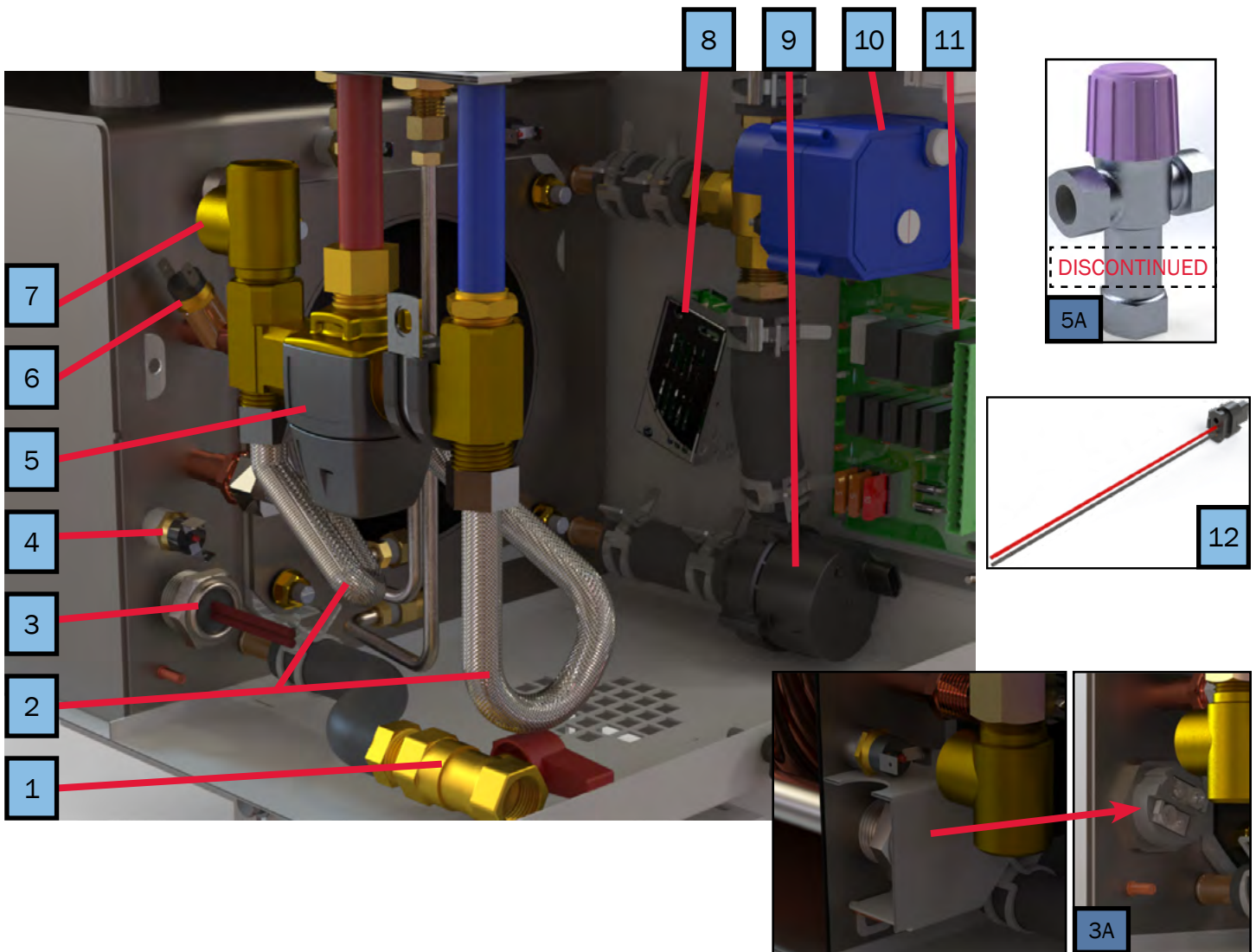
Key	Part Number	Beginning of Use	Description
1	SME-200-002	Launch	Access Cover
2	HDX-010-400	Launch	Star Grip Thumb Screw (x2)
3	MSE-200-0FB	Launch	Kit: Expansion Bottle, Fluid Sensor, Clamps, Hose
4	PLX-CTB-270	Launch	3/4" Constant Tension Hose Clamp
5	ELE-000-508	Launch	12V DC Switch Panel Assembly
6	ELX-283-283	Launch	Rocker Switch
7	PLX-664-750	Launch	Pipe Nipple, 3" 1 1/2" (M) NPT
8	PLX-11D-028	Launch	90° Exhaust Elbow, 1 1/2" (M) NPT
9	PLX-664-730	Launch	Pipe Nipple, 4" 1 1/2" (M) NPT



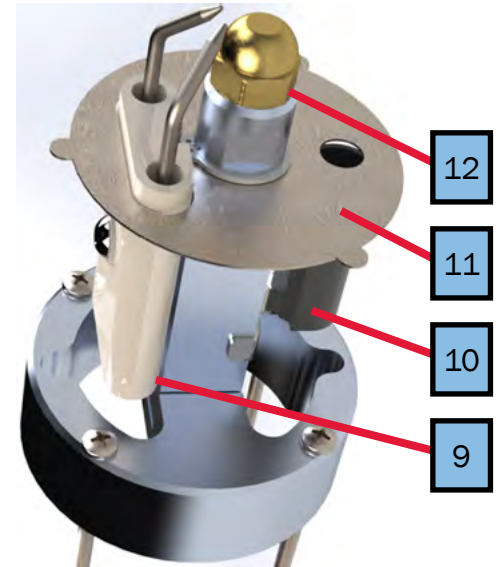
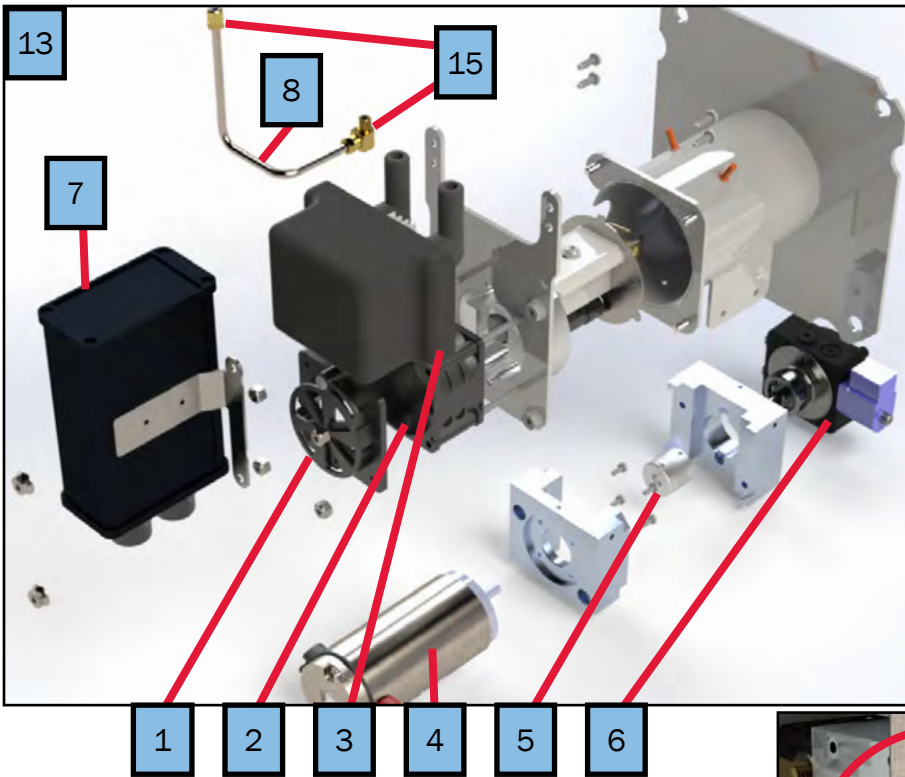
Key	Part Number	Date of Use	Description
1	PLX-105-800	Launch	Diesel Fuel Fitting Connection
2	PLX-200-345	Launch	90° Hose Elbow w/ 1/8" Barb
3	ELX-630-001	Launch	AC Electric Relay



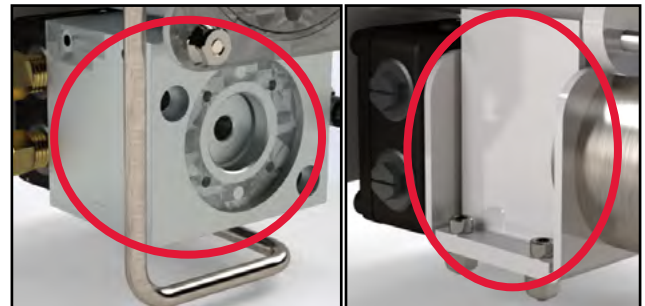
Key	Part Number	Date of Use	Description
1	PLX-BV1-200	Launch	Brass Ball Valve ½" (F) NPT
2	PLX-110-050	Launch	Lead-Free Braided Stainless Steel Faucet Connector (x2)
3	PLX-362-100	4/26/2019	Danfoss 120 °F Tempering Valve
3A	PLX-09P-100	Launch	Honeywell 140 °F Tempering Valve
4	FLE-250-001	Launch	Fuel Supply Line
5	FLE-250-002	Launch	Fuel Return Line
6	ELE-LTC-200	Launch	Low Temperature Cutoff Thermostat
7	PLX-105-800	Launch	Brass Bulkhead Fitting, ¼" x ¼" (F) NPT
8	ELE-015-011	Launch	Thermostat, Control ½" (M) NPT
9	ELE-HLT-425	Launch	215 °F High-Limit Thermostat
10	ELX-000-051	Launch	12V DC Interlock Switch
11	PLE-888-250	Launch	Three-Way Motorized Valve Kit
12	EPE-800-100	Launch	Relay Control Board Cradle
13	ELE-400-025	Launch	Buck Boost Replacement Kit
14	ELE-RCB-200	Launch	200 Series Relay Control Board
15	PLX-100-900	Launch	Buehler C21 Fluid Pump
16	ELE-400-900	Launch	Buehler C21 Wire Harness



Key	Part Number	Date of Use	Description
1	PLX-BV1-200	Launch	Brass Ball Valve ½" (F) NPT
2	PLX-110-050	Launch	Lead-Free Braided Stainless Steel Faucet Connector (x2)
3	TBD	Launch	1000W AC Element ¾" (M) NPT
3A	ELX-2E7-250	TBD	1kW 120V AC Electric Element, 1" NPSM
4	ELE-888-426	Launch	215 °F 120V AC High-Limit Thermostat
5	PLX-362-100	TBD	Danfoss 120 °F ½" NPT (M) Tempering Valve
5A	PLX-09P-100	Launch	Honeywell 140 °F Tempering Valve
6	ELE-LTC-200	Launch	Low-Temperature Cutoff Thermostat
7	PLX-111-125	Launch	125PSI Pressure Relief Valve
8	ELE-400-025	Launch	Buck Boost Replacement Kit
9	PLX-100-900	Launch	Buehler C21 Fluid Pump
10	PLE-251-D01	Launch	Three-Way Motorized Valve Kit (250D)
11	ELE-RCB-200	Launch	200 Series Relay Control Board
12	ELE-400-900	Launch	Buehler C21 Wire Harness



NOTE: Some units may have differing fuel pump mounting hardware.



Key	Part Number	Date of Use	Description
1	DBE-888-100	Launch	Diesel Air Shutter Kit
2	DBE-888-151	Launch	Diesel Combustion Blower Fan Kit
3	DBE-888-110	Launch	Diesel Igniter Coil Kit
4	DBE-800-008	Launch	Fuel Pump Motor
5	DBE-800-088	Launch	8mm x 8mm Set Screw Coupler
6	DBE-800-056	Launch	Danfoss Diesel Fuel Pump with Solenoid
7	ELE-888-888	Launch	Aqua-Hot 250D Burner Controller Kit
8	FLE-800-007	Launch	Burner Fuel Supply Line
9	ELX-800-020	Launch	Diesel Igniter Module
10	ELE-888-130	Launch	Diesel Photo-Eye Kit
11	SME-800-053	Launch	Fuel Tower Heat Shield
12	WPX-886-41A	Launch	Diesel Fuel Nozzle 60°
13	DBE-000-000	Launch	Aqua-Hot Diesel Burner Assembly
14	ELE-888-121	Launch	Replacement Electrode Wires Kit (not pictured)
15	PLX-800-010	Launch	Fuel Supply Line Brass Elbow



1



2



3



4



5

Key	Part Number	Date of Use	Description
1	MSX-300-275	Launch	Pink Propylene Glycol Concentrate
2	MSX-300-GRN	Launch	Green Propylene Glycol Concentrate
3	MSX-300-270	Launch	1 Gallon Pink Boiler Antifreeze
4	MSX-300-300	Launch	1 Gallon Green Boiler Antifreeze
5	MSX-907-162	Launch	Coolant Tester Refractometer

Parts Manual

200_{SERIES}



AHE-250-D01



Aqua-Hot Heating Systems, LLC
7501 Miller Drive, Frederick, CO 80504

Visit us online at www.aquahot.com
Call us at 574-AIR-XCEL (574-247-9235)

©2021 Aqua-Hot Heating Systems, LLC. Printed in the USA